



CubeSquare Technologies Pvt. Ltd.

Delivering Exponential Value...

- Software Services & Products
- Business & Technology Consulting
- Business Process Outsourcing
- Education & Training





Table of Contents

About Us	3
CST Organization Framework	4
Goals & Values	5
CST Strategic Business Model	6
CST Operations Framework	7
CST Project Management Framework	8
Service Offerings	9
Products	13
Technology Expertise	17
Industries We Focus	18
Engagement Models	19
Contact Us	20





About Us

CubeSquare Technologies Pvt. Ltd. (CST) is a fast paced growing IT Organization with a vision to “*deliver exponential value*” to its clients, affiliates and partners across the globe. The primary objective of CST is to delight its clients by delivering best-in-class business & IT consultancy, providing high end state of the art innovative IT solutions and services and this will enable our client to achieve success in business and thus we can establish a never ending business relationship as its IT strategy partner.

CST is driven by highly experienced core management team with “*Holistic Strategic Model*”. CST is having state of the art infrastructure set up to adhere “*Business Continuity*”.

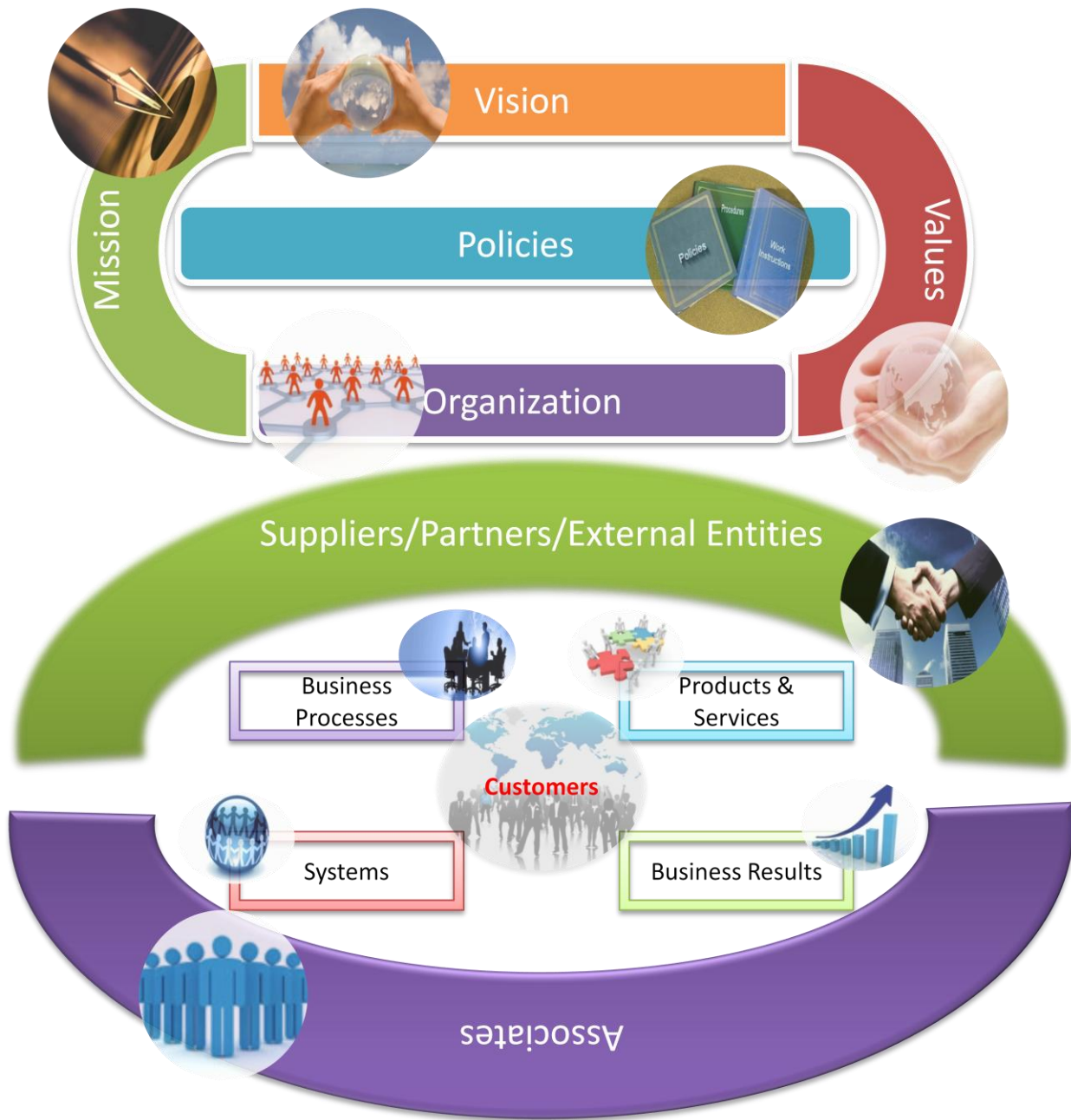
CST provides services in the areas of high-end software consulting, application outsourcing and product development. At the core of CST is a strong management team with over 1000 man months of experience in some of the best organizations of the world and a proven track record of delivering some of the most complex programs and development & testing of market leading products. With sound domain knowledge across various industry verticals combined with out of the box thinking, we keep on delivering value to our customers through our pioneering software solutions and best of the industry practices and processes. Our role varies from one-source solution vendor to an extended development partner to a key on-site development group.

CST is a privately owned company with well established office in India at Janakpuri (New Delhi). Our sales arm is located in Philadelphia, USA.

Since our inception with a strong team having vast experience in application and product development, we aim to grow steadily into a reputed provider of high-quality and cost-effective software development services. We are devoted to provide robust, lucrative and long term services, enabling our customers to get high returns on their IT investments coupled with corporate authority designed for greater agility and market focus in this globally competitive environment.



CST Organization Framework





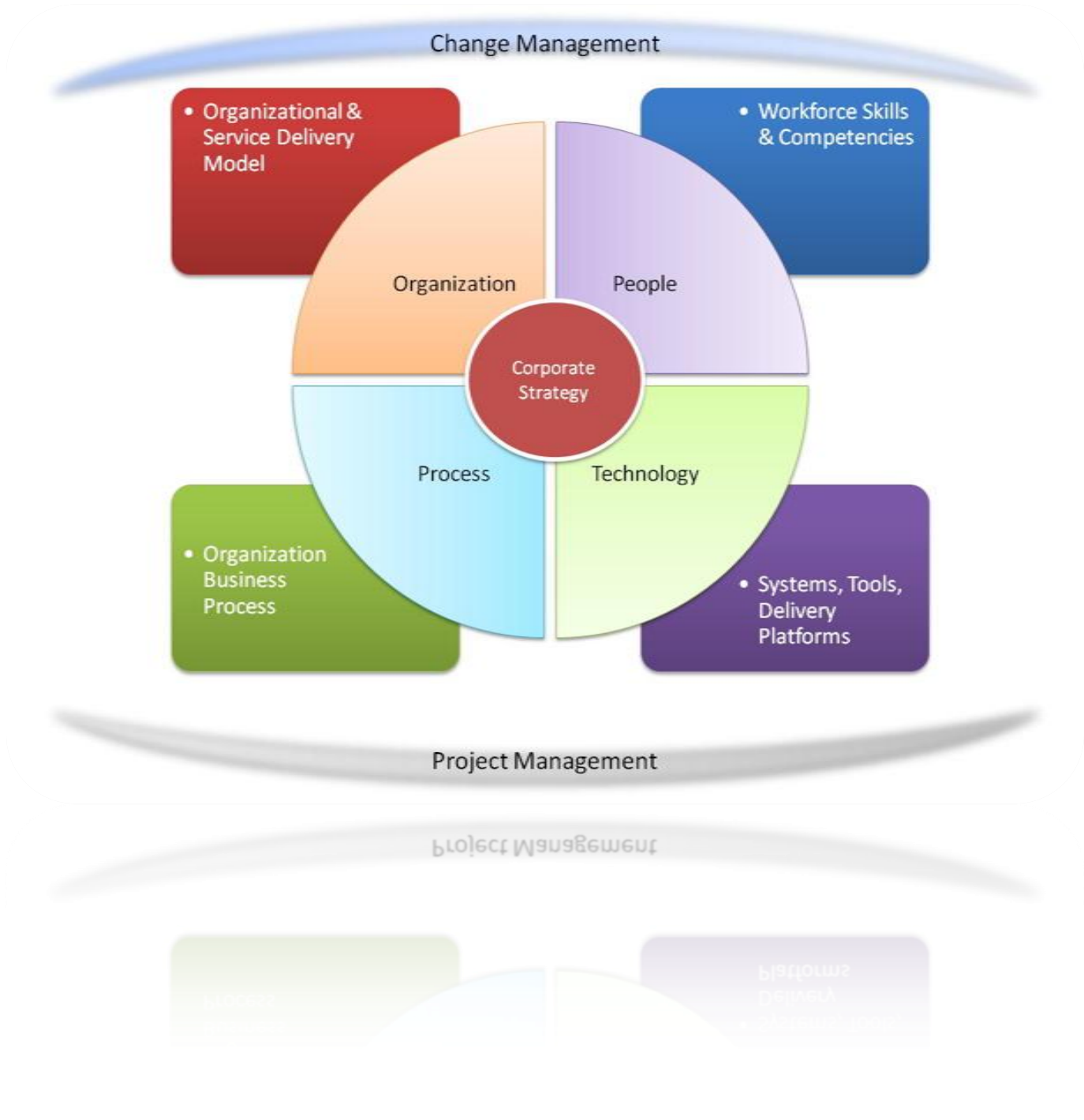
Our Goals

- ✓ Be a globally recognized supplier of quality products and services
- ✓ Be a best workplace where employees are proud to work
- ✓ To create value for customers, partners, investors and stakeholders
- ✓ To make a social impact through technology
- ✓ High end innovation & research
- ✓ “360 Degree Satisfaction” for each stakeholder.

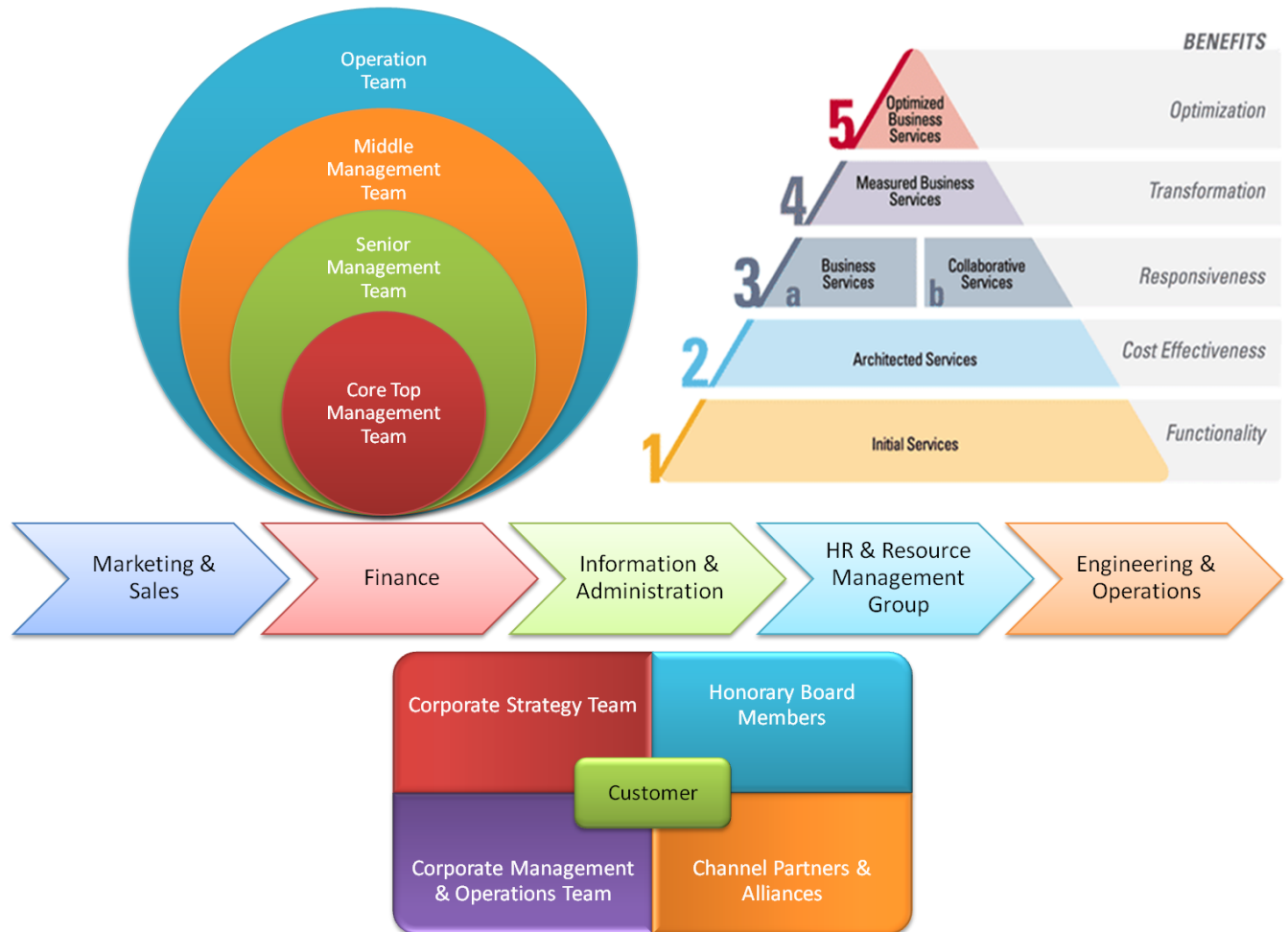
Our Values

- ✓ Integrity, Sincerity & Transparency
- ✓ Reliability
- ✓ Customer Focused
- ✓ Focus on Operating Excellence
- ✓ Collaborative Approach
- ✓ Quality Centric
- ✓ Respect for individual

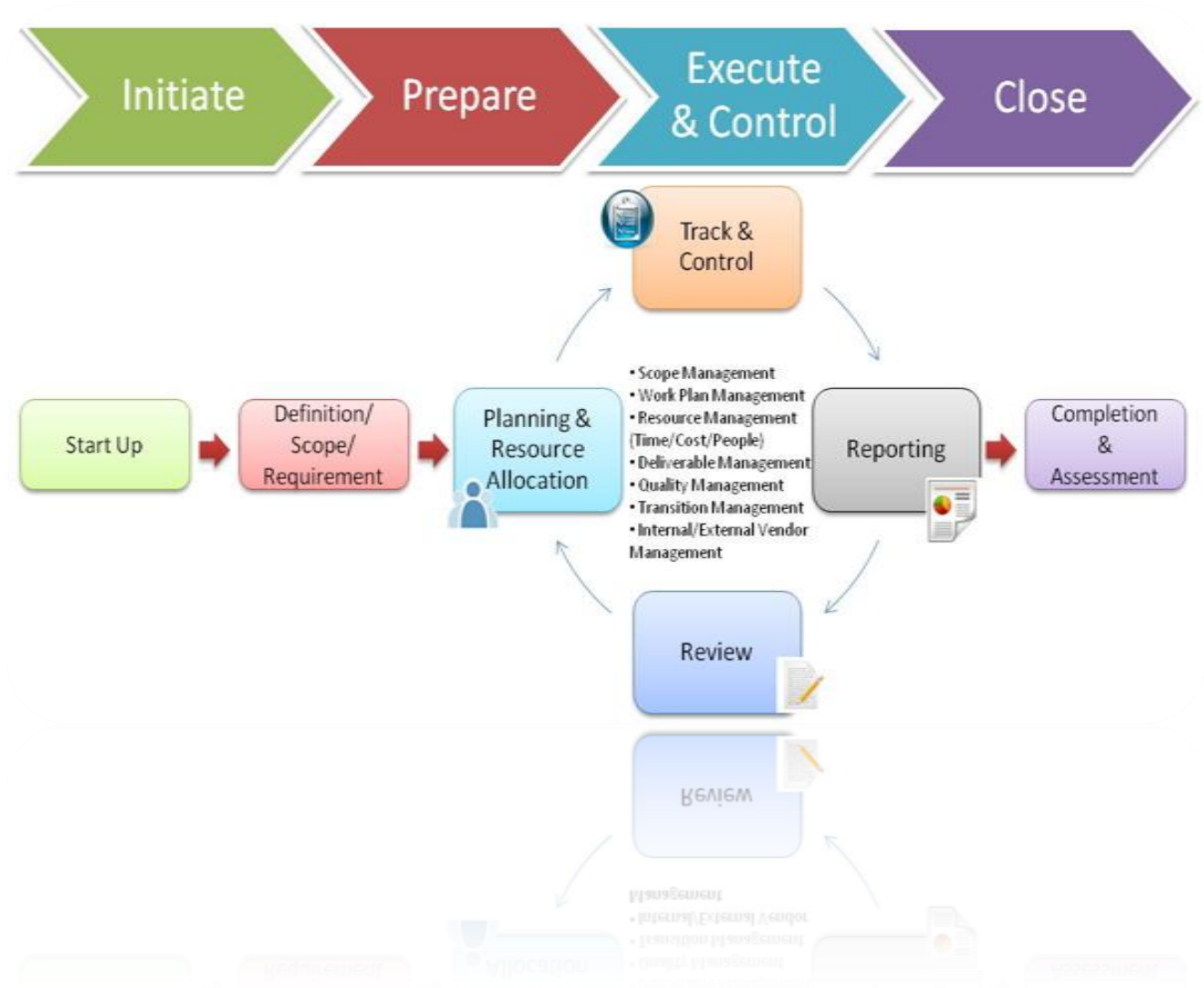
CST Strategic Business Model



CST Operations Framework



CST Project Management Framework





Service Offerings

CST has a wide range of service offerings for your organization IT needs. We classify our services into following broad categories.

Application Outsourcing

- **Application Development**
 - New customized software application design, development, Implementation and post implementation support
 - MIS solutions and reporting
- **Application Testing**
 - Manual and Automated Testing
 - Performance and Load Testing
 - Privacy and Security Testing
- **Application Support & Maintenance**
 - Feature enhancements, upgrades and integration of existing applications
 - L2, L3 service level based continues support
- **Application and Data Migration**
 - Analysis of existing application and data
 - Identification of technology and platform
 - Re-engineering of application
 - Data transformation and migration
- **Business Intelligence and Data warehousing**
 - Design, Development and Implementation of high performing databases for data warehousing
 - Data extraction, Cleansing, Transformation and Loading
 - OLAP for derived values for data
 - Design, Development and Implementation of decision support dashboards (scorecards, measures etc.)



Product Development & Services

- **Product conceptualization & development**
 - Product conceptualization, architecture design and platform selection
 - Define development strategy
 - UI prototyping and technology POC
 - Product Development
- **Product Support and Maintenance**
 - Feature enhancements & upgrades
 - L1, L2, L3 maintenance and bug fixing
 - Product Localization – Extracting and localizing strings, Resizing and rearranging dialog controls, rebuilding resource files
 - Product Extensions – Identifying and quickly extending product functionality, extending product design and scope for cross-platform integration, Extending product for web and smart devices
- **Product Migration and Porting**
 - Operating System migration
 - Pre .NET to .NET migration
 - Application server migration
 - J2EE to .NET migration and vice versa
 - Proprietary architecture to an open standards based architecture
 - Database Migration
- **Product Customization & Implementation**
 - Product Installation
 - Integrating and customizing product to meet end user's requirement
 - Product Training
- **Product Co-Development**
 - Offshore based product co-development to leverage low cost advantage with risk/reward model
- **Product Testing**
 - Manual and Automated Testing
 - Performance and Load Testing
 - Privacy and Security Testing

Business & IT Consulting

- **Package Implementation, Support, Maintenance (SAP & Oracle Apps)**
 - Staff Augmentation
 - IT Consulting
 - Application Support & Maintenance
 - Helpdesk Support
 - QA Testing

- **Program & Project Management**
 - Project Portfolio management
 - End-to-End Program and Project Management
 - Quality Management
 - IT sourcing management

- **ITIL Service Management Design & Auditing**
 - Service Support – Service desk / Service Request Management, Incident & Problem Management, Change Management, Release Management, Configuration Management
 - Service Delivery – Service Level Management, Capacity Management, IT Service Continuity Management, Availability Management
 - Security Management
 - Application Management, Application Portfolio Analysis
 - Software Asset Management

- **Process Consulting**
 - Identification of Software (Product & Package) Development /Implementation business model and key practices area
 - Detailed Software development/implementation process assessment (current state vs best practices framework)
 - Independent assessment of delivery practices to identify high exposure risks and to recommend remedial actions
 - Identification of improvement opportunities to address symptoms and risks

- **Information Security Assessment**
 - IT Audit planning and preparation
 - Establishing Audit objectives
 - Performing the review
 - Issuing the review report



Mobile & Internet Development

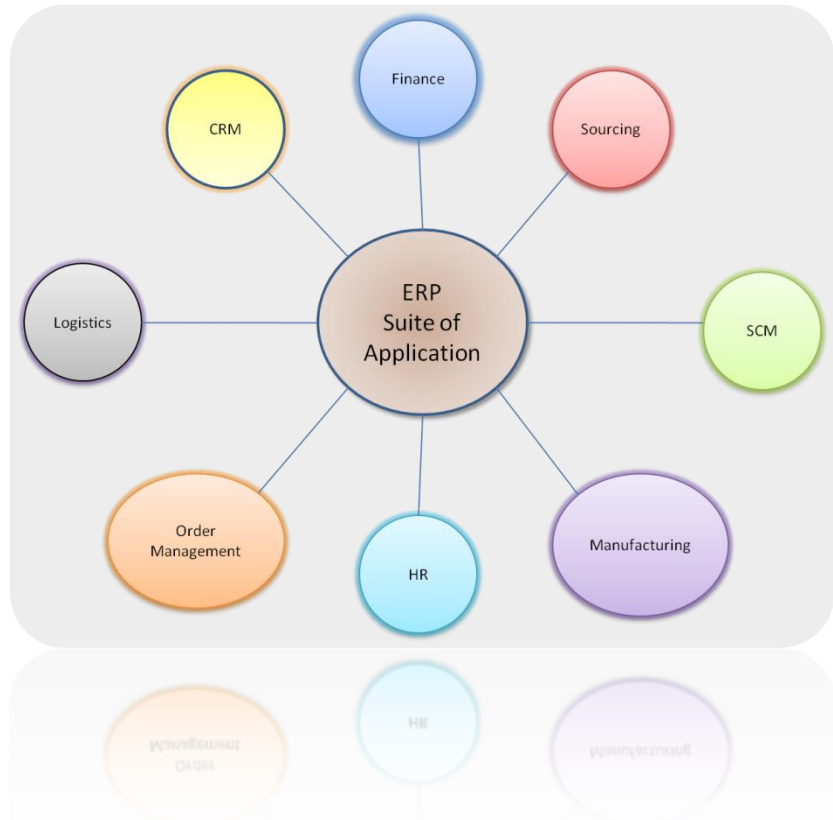
- **Mobile Application Development**
 - Custom Mobile Apps development
 - Mobile games development
 - Business and enterprise mobile application solutions
 - Mobile website development
 - Mobile application integration
 - Mobile porting services
 - Mobile application testing
 - Icon, Mock and Theme design for mobile application
- **Website Designing, Development and Maintenance**
 - Custom Website design and development, open-source package customization, CMS development, website maintenance , Search Engine Optimization
- **End-to-End E-commerce Solutions**
 - B2C and B2B e-commerce solutions
 - Product Display, Options, Shopping Cart, Inventory management, auto tax and discount structures, pricing, order fulfillment, and customer account management

Content-Related IT Services

- Business Process Outsourcing / Knowledge Process Outsourcing
- Editorial, Production & Technology Services
- Data conversion, Data capture, Data entry & XML services
- Digitization & Imaging

Products

CST has a strong focus on providing product offerings for “niche-market” segments through alliances and in-house product development strategy and plans to invest around 15% of its revenue for product engineering R&D budget. Our product engineering team helps design, build, test, and maintain high-quality and reliable products, components and modules that significantly lower implementation costs, shorten timelines, and decrease risk. With our Agile and Scrum-based methods for distributed product engineering we are uniquely equipped to help clients introduce innovative product features that meet dynamic market demands and deliver value to end users. Our current products offering are given below.



ERP for Small and Medium Enterprises

Our ERP (Enterprise Resource Planning) is a top-notch solution for SME having a set of integrated modules which provides the enterprise with the necessary capabilities to integrate and synchronize isolated functions into streamlined business Processes. It also optimizes the resources available in or- to gain a competitive edge in the turbulent business environment. The solution is modular, flexible, scalable open and can be customized to unique end-user needs with a comprehensive coverage of features. Some of the key benefits of the solution are as follows:

- ✓ Helps in maintaining its focus on the growth of the business.
- ✓ Better management of the business leading to better profit margins.
- ✓ Provides the better information that enables faster decision making process.
- ✓ Better visibility of the business and helps in proper monitoring of the operations.



- ✓ Reduced operational costs due to the better coordination system among the various functional units of the organization. It helps in lowering costs involving inventory, marketing, sale, production and other supportive features.
- ✓ Helps in taking timely cost effective measures. It helps in easy tracking of the costs involved in operations and controls them as required.
- ✓ Builds better team work that ultimately leads to the growth of the business.
- ✓ Leads to a reduction of IT related costs thereby reducing the total cost of ownership.

For more details, Please write us at info@cubesquaretech.com

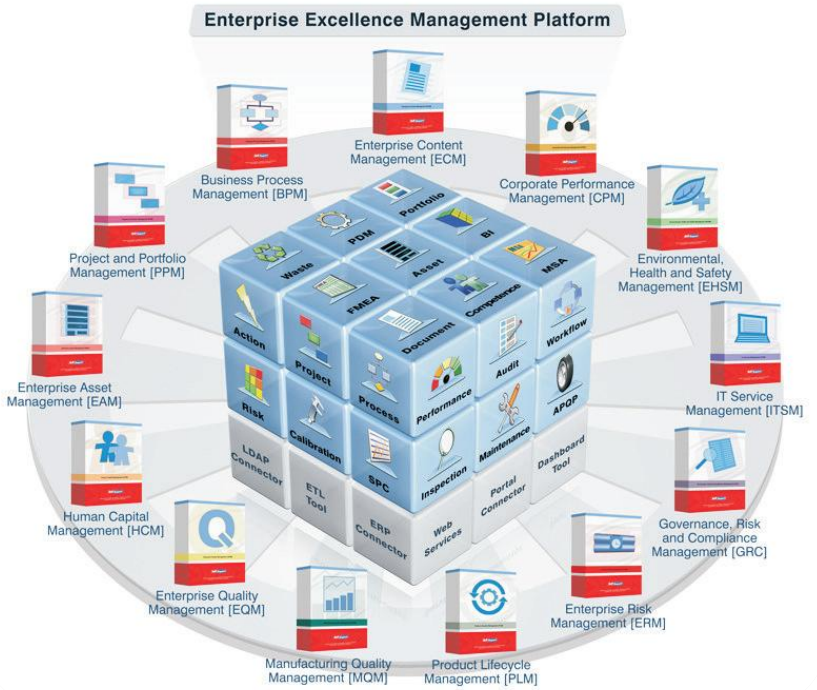
SoftExpert Excellence Suite

CST has reseller & implementation partnerships with Milan Solutions (<http://www.milansolutions.in/>) for SoftExpert Excellence Suite offering (<http://www.softexpert.com/se-suite.php>), an integrated set of modules that leverages the collaborative business management processes in supporting continuous improvement and optimization of today's heterogeneous enterprise. It helps leading companies to attain a competitive edge through repeatable and predictable management processes and compliance execution

involving people across departments, business units, suppliers and customers.

SE Suite provides top-notch solutions that integrate the modeling, implementation, execution, control monitoring of multiple business application demands. By integrating the requirements of multiple management systems into central information portal it helps organizations to reduce duplication of effort, increase efficiency, and lower overall costs of management system maintenance.

SE Suite helps organizations automate processes for managing documents & records, business processes, strategic and operational performance indicators, projects and portfolios, demand, risks, non conformances and customer complaints, corrective & preventive actions (CAPA), audits, training, product lifecycle, inspection, calibration, maintenance, SPC, APQP-PPAP, FMEA, MSA, waste, BI, and many other industry challenges. Download Milan Brochure - SE Excellence Suite.





- ✓ Business Process Management [BPM]
- ✓ Corporate Performance Management [CPM]
- ✓ Enterprise Asset Management [EAM]
- ✓ Enterprise Content Management [ECM]
- ✓ Enterprise Quality Management [EQM]
- ✓ Environment, Health and Safety Management [EHSM]
- ✓ Governance, Risk and Compliance Management [GRC]
- ✓ IT Service Management [ITSM]
- ✓ Human Capital Management [HCM]
- ✓ Manufacturing Quality Management [MQM]
- ✓ Product Lifecycle Management [PLM]
- ✓ Project and Portfolio Management [PPM]
- ✓ Enterprise Risk Management [ERM]

For more details, please mail us your queries at info@cubesquaretech.com

Technology Expertise

Our outsourcing services cover a broad spectrum of technology areas spanning from client server applications, object-oriented software, internet or intranet to legacy applications. Some of the key technology stack where we have got the expertise is below:

 Microsoft® MICROSOFT	 php MySQL™	 Java JAV	
ORACLE®	 ANDROID ANDROID	 APPLE	 SAP
 INFORMATICA The Data Integration Company™	 BlackBerry blackberry	 webMethods webMethods	
 Linux™	 Adobe ADOB	 IBM® COGNOS AN IBM® COMPANY AN IBM® COMPANY	



Industries We Focus

CST service offerings spans across the following industries:

✓ Retail & Manufacturing

- E-Commerce Solutions
- Logistics & Supply Chain Solutions
- Warehouse & Inventory Management

✓ Media, Publishing & Entertainment

- Electronic Publishing
- Mobile Application Development
- Social Media & Entertainment

✓ Travel & Hospitality

- Reservation & Booking System
- Flight & Online Travel Portals

✓ Healthcare

- Hospital Information Systems
- Pharmacy Information Systems
- Clinical Trial Management
- Medical Transcription

✓ Financial Services

- Banking
- Insurance

✓ Education & Training



Engagement Models

CST offers multiple engagement models to meet diverse needs of global clients. You can choose from any one of the generally accepted models below or a combination of them for different phases of your project.

- ✓ Onsite – Offsite Staff Augmentation (Manpower deployment)
- ✓ Effort based pricing or Time & Material
- ✓ Milestone based billing
- ✓ Dedicated Development Facility
- ✓ Build-Operate-Transfer (BOT) Model
- ✓ Project based pricing or fixed bid
- ✓ Strategic Partner Model
- ✓ Offshore Development Center(ODC)
- ✓ Matrix Model

While customizing the engagement model for each client's unique need, the core focus is given to following:

- ✓ High Quality
- ✓ Fast Delivery
- ✓ Low Cost
- ✓ Increased project profitability
- ✓ Flexible resource Allocation and management with no up front investment
- ✓ Predictable support
- ✓ Handling future needs of the customer



Contact Us

CubeSquare Technologies Pvt. Ltd.

415, Kirti Shikhar, (Regd. Office)

District Center, Janakpuri
New Delhi – 110058.
India.

Phone: +91-11-45697053

303-304, DDA Building 5,

Janakpuri District Center,
Janakpuri, New Delhi -110058

Phone: +91-11-45697053, +91- 9311007211

Suite #2079,

Lincolnshire Road,
Furlong, PA 18925
Philadelphia, USA.

Phone: +1-937-671-0005

Fax: [+91-11-25532353](tel:+91-11-25532353)

Email: info@cubesquaretech.com

Web: www.cubesquaretech.com